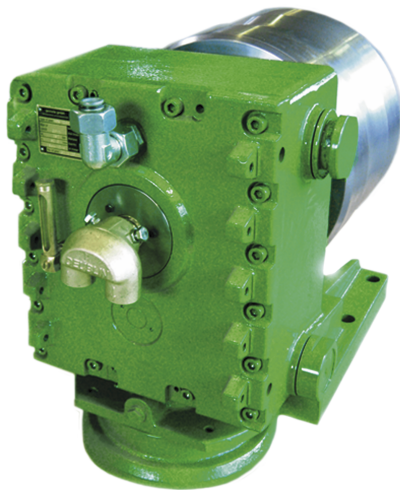
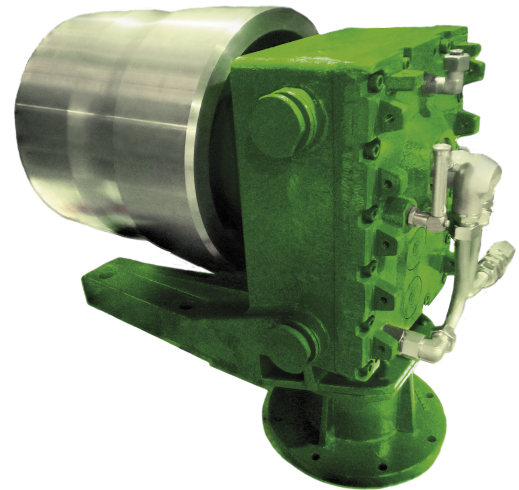


## Bevel helical gears and roller watercooled



**TYPE KSW 104-1A**



**TYPE KSW 200-2A**

<b>Roller:</b>	<b>320 / 85 x 260</b>
<b>Torque:</b>	<b>500 Nm</b>
<b>Speed:</b>	<b>60,5 min<sup>-1</sup></b>
<b>Reduction:</b>	<b>1:12,4</b>
<b>max. bearing load of the roller:</b>	<b>2000 kg</b>

<b>Roller:</b>	<b>400 / 120 x 400</b>
<b>Torque:</b>	<b>1000 Nm</b>
<b>Speed:</b>	<b>24,7 min<sup>-1</sup></b>
<b>Reduction:</b>	<b>1:19,22</b>
<b>max. bearing load of the roller:</b>	<b>3750 kg</b>

The new developed one- and two-stage gear units are designed for use in multi-strand continuous casting plants.